

PRODUCT FILE

SIEMENS MD 30

Country of manufacture:	Germany
Year of manufacture:	1910
Number of blades:	3
Diameter:	140 cm
Power:	80 watts
Weight:	13 kg

SIEMENS MD 30

Germany - 1910

Siemens was among the first European manufacturers of fans which were mainly targeted to the British colonial market, and therefore with frequency and voltage suitable to those countries. The catalogue of Siemens' Historical Museum shows how during the first decade of 1900 the firm's Munich plant switched from the production of direct-current models to the production of two new alternating-current fan models: MD 30 and MD 70.

They were two special models, with large openings in the engine body to ease its cooling-off, and equipped with an oil cup in the upper part to lubricate the engine shaft. Both these models, perfectly restored and in working conditions, are considered extremely rare.

Guaranteed quality

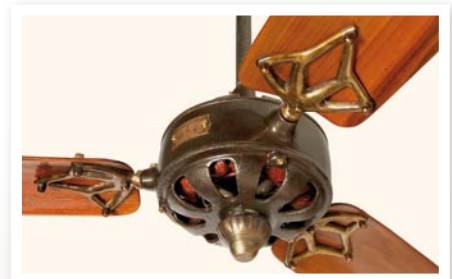


Fantique's "Period Originals" collection is covered by a 2 year warranty. Hand assembled one by one, the fans are checked and tested individually in each and every components before packaging. Every function is also meticulously tested: from balancing and blades inclination to flow rate, from electric standards to rigorous endurance tests (5 hours at full speed).

Telephone assistance



Our antique fans are mounted in the same manner as commercial models, which is quite simple. We nevertheless recommend that you rely on qualified personnel, to whom Fantique offers telephone assistance free of charge on any issues (not necessarily related to the mounting of the fan), by simply calling the following numbers: +39 06 68802417 or + 39 337 733077.



FANTIQUE

ANTIQUÉ CEILING FANS FOR LUXURY LIVING



STYLE ABOVE ALL

Headquarters: via Ariosto, 24 - 00185 Rome - Italy • Show room: via del Gonfalone, 6 - 00186 Rome - Italy
Tel. +39 06 68802417 • Fax +39 06 45498504 • Mob. +39 337 733077

casablanca@casablanca.it - fantique@fantique.com - www.fantique.com


FANTIQUE
ANTIQUÉ CEILING FANS FOR LUXURY LIVING